

BOUNDARY OF PROPOSED ASSESSMENT DISTRICT NO. 19-14 CITY OF MANHATTAN BEACH, COUNTY OF LOS ANGELES, STATE OF CALIFORNIA

FILED IN THE OFFICE OF THE CITY CLERK OF MANHATTAN BEACH,
THIS ____ DAY OF _____, 20__.

CITY CLERK
CITY OF MANHATTAN BEACH

I HEREBY CERTIFY THAT THE WITHIN MAP SHOWING PROPOSED
BOUNDARIES OF ASSESSMENT DISTRICT 19-14, CITY OF
MANHATTAN BEACH, STATE OF CALIFORNIA, WAS APPROVED BY
THE CITY COUNCIL OF THE CITY OF MANHATTAN BEACH AT A
REGULAR MEETING THEREOF, HELD ON THE ____ DAY OF
_____, 20__, BY ITS RESOLUTION NO. _____

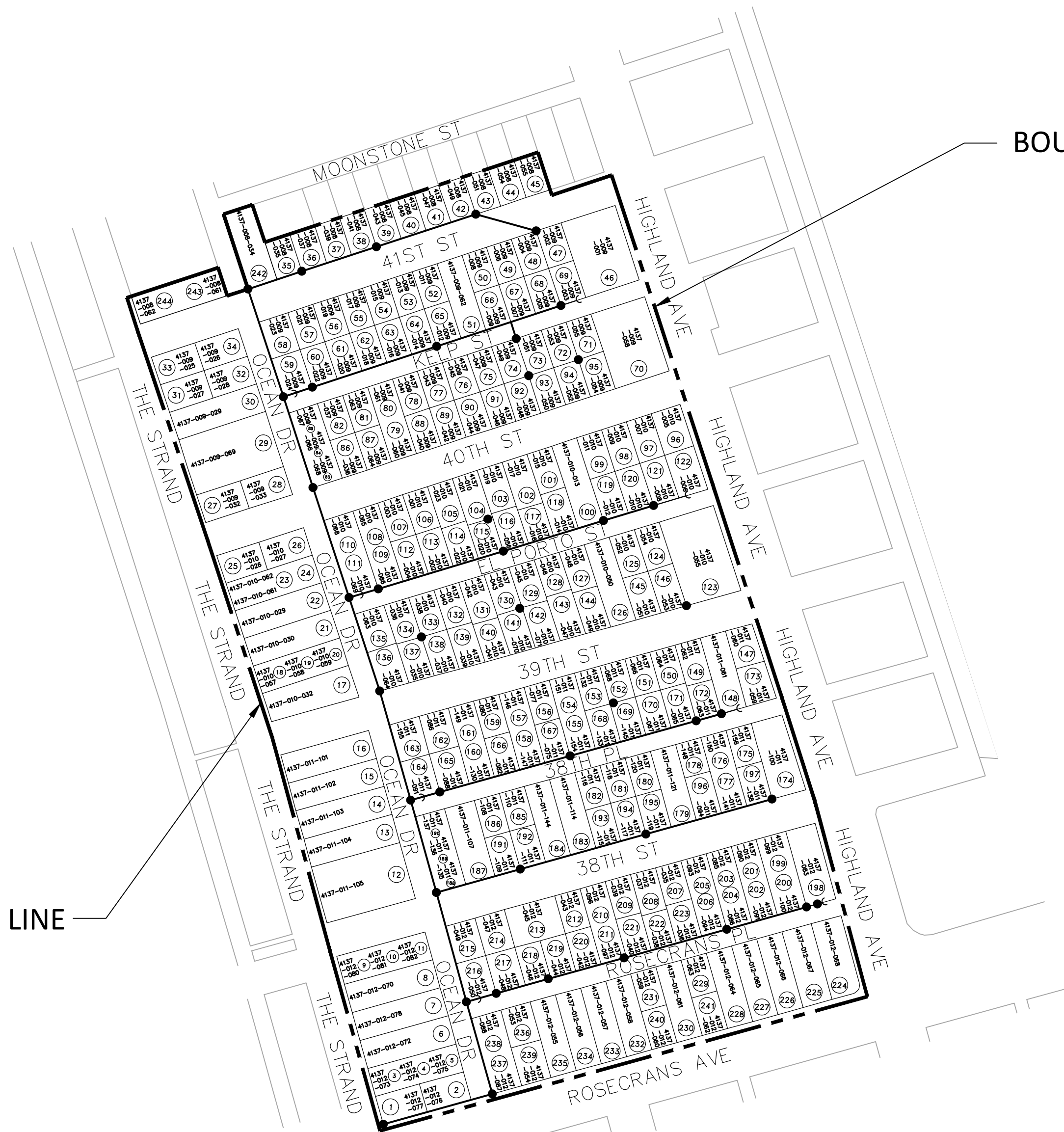
FILED THIS ____ DAY OF _____, 20__, AT THE HOUR
OF ____ O'CLOCK ____ M. IN BOOK ____ OF MAPS OF
ASSESSMENT AND COMMUNITY FACILITIES DISTRICTS AT
PAGE ____, IN THE OFFICE OF THE COUNTY RECORDER IN THE
COUNTY OF LOS ANGELES, STATE OF CALIFORNIA.

COUNTY RECORDER OF COUNTY OF LOS ANGELES

NOTE: FOR PARTICULARS OF THE LINES AND DIMENSIONS OF
ASSESSOR'S PARCELS, REFERENCE IS MADE TO THE MAPS OF THE
LOS ANGELES COUNTY ASSESSOR, WHICH MAPS SHALL GOVERN
FOR ALL DETAILS RELATING THERETO.

BOUNDARY LINE

BOUNDARY LINE



LEGEND

- POWER POLE TO BE REMOVED
 - GUY WIRE TO BE REMOVED
 - POWER POLE TO REMAIN IN PLACE
 - GUY WIRE TO REMAIN IN PLACE
 - NEW RISER POLE
 - OVERHEAD UTILITY GUY WIRE TO REMAIN
 - POWER LINE TO BE REMOVED
 - POWER LINE TO REMAIN
 - - - - - ASSESSMENT DISTRICT AREA BOUNDARY
 - ON-SITE PARCEL
 - OFF-SITE PARCELS
 - ⊙(XXX) ASSESSMENT NO.
- PARCELS: 244
DISTANCE: 3,391 LF
POWER POLES TO BE REMOVED: 42

