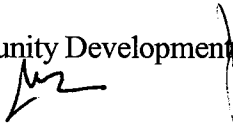


**CITY OF MANHATTAN BEACH
DEPARTMENT OF COMMUNITY DEVELOPMENT**

TO: Parking and Public Improvements Commission

FROM: Richard Thompson, Director of Community Development
Ana Stevenson, Management Analyst 

BY: Erik Zandvliet, Traffic Engineer

DATE: July 10, 2008

**SUBJECT: Robinson Elementary School Area Study
Follow-Up Evaluation**

RECOMMENDATION:

It is recommended that the Commission conduct a public hearing and vote to continue the initial traffic safety measures and implement the following additional measures for the area surrounding Robinson Elementary School:

1. Paint a white student loading zone and divided lane line in the existing turnout in front of Robinson Elementary School.
2. Relocate existing school loading zone on Francisco Street easterly to the CDC gate and add an afternoon loading time between 2:30pm and 3pm.
3. Implement a regular and rotating police presence at Robinson School to enforce traffic laws.

BACKGROUND:

On November 19, 2002, the City Council approved the City-Wide Neighborhood Traffic Management Program (NTMP). This Program established a set of procedures to evaluate neighborhoods in an effort to improve livability of neighborhood streets. The NTMP created a consistent way for the City to evaluate traffic requests, so that a comprehensive plan can be implemented that will minimize adverse impacts both before and after implementation of traffic calming measures.

On March 18, 2003 and included in the 2008-09 Work Plan, the City Council prioritized several areas of the City for further analysis. At that meeting, the City Council identified the neighborhoods immediately around the elementary and middle schools as one of these priority areas. Since each school area has unique conditions and issues, each school is being evaluated separately. Grand View was chosen as the first priority.

The NTMP Program has been followed in developing possible vehicular and pedestrian improvements for the Robinson Elementary School. The process includes the following seven steps:

- Step 1-** Identify Candidate Streets/Neighborhoods
- Step 2-** Preliminary Screening and Evaluation
- Step 3-** Engineering Analysis/Preliminary Recommendations
- Step 4-** Neighborhood Meetings and Survey/Petitions
- Step 5-** Develop, Install, and Evaluate Test projects
- Step 6-** Determination of Permanent Project
- Step 7-** Monitoring

To initiate the NTMP process, City and Police Department Staff met on several occasions with school representatives and local resident groups to listen and discuss school related traffic concerns. Additional comments gathered at a public meeting on February 7, 2007 and via correspondence to the City have also been incorporated into the analysis.

On December 7, 2006, the PPIC heard public testimony and reviewed the list of initial recommendations prepared by the Traffic Engineer to begin addressing school and resident concerns in the neighborhood surrounding the Robinson Elementary School. At that meeting, both residents and school representatives gave additional insight into traffic conditions surrounding the school campuses. The Commission voted to make several changes to the recommended measures.

On March 20, 2007, the City Council discussed the Commission's recommendations and heard additional public testimony from school representatives and residents surrounding the school area. The City Council approved initial measures numbered 1 through 22 for a trial period and authorized funding for one crossing guard.

Immediately after the City Council meeting, the Public Works Department began implementing the sign and marking changes. Some of the work was completed during Spring Break 2007 and the remainder before school resumed in August 2007.

Pursuant to a request from the school in November 2007, the City modified the loading zone hours and sign placement on Morningside Drive in front of the school. In addition, a white line was painted to delineate the loading zone queue area.

DISCUSSION:

Robinson Elementary School is located on Morningside Drive in the southwest quadrant of the city, just north of Hermosa Beach City Limits. The school attendance boundary extends from beach on the west, Manhattan Beach Boulevard to the north, Sepulveda Boulevard to the east, and the City Limits to the south. There are 379 students in Grades K through 5. School begins at 8:15am and 8:55am with two dismissals at approximately 2:05pm and 2:45pm. Kindergarten and minimum days have different schedules. There are 34 off-street parking spaces on the school campus.

Circulation around Robinson School is primarily via Morningside Drive in front of the school, and Francisco Street along the side, and 1st Street north of the school. Kindergarten students primarily use a side gate along Francisco Street and the front loading zone. A loading zone turnout is painted with red curb on the Morningside drive frontage. Staff parking is in two primary lots, comprised of 12 spaces in the 1st Street lot and 19 spaces in the Francisco Street lot. Three additional spaces are provided in the front turnout area. A limited-time green zone for approximately four vehicles is painted on the east side of Morningside Drive along the turnout area.

The local neighborhood streets surrounding Robinson Elementary School are built in a grid network and served by local collector streets such as 1st Street and Highland Avenue. Many streets are narrow and short in length. The streets surrounding the school are improved with curbs, gutters and some sidewalks. Morningside Drive is 40 feet wide, and narrows to 30 feet north of 1st Street. Most other streets are 30 feet wide, with 20 feet wide alleys serving residential garages. All of the local streets surrounding the school campuses are congested at arrival and dismissal times on school days, often blocking local residential traffic. Parking is generally allowed on both sides of the streets and prohibited in alleys.

EVALUATION OF INITIAL MEASURES

Staff conducted several follow-up field investigations to evaluate the effectiveness of the implemented traffic safety measures. Traffic flow during school hours has improved, particularly along Morningside Drive and Francisco Street. Congestion continues to occur along 1st Street, largely due to the narrowness of the street. Overall, field reviews confirm that traffic is flowing smoother, and appears to be more orderly. This can be attributed several factors: the designated loading zone in front of the school, new turn restrictions, loading instructions issued to the parents by the school, clear traffic markings as well as heightened police presence and a school campaign to walk to school. The improvements show how the combined efforts and cooperation of school leaders, PTA officials, City departments and Police staff have been able to make a difference. It also shows that all three “E’s” - Engineering, Education and Enforcement, are necessary to make a traffic safety system work.

Ms. Nancy Doyle, the Robinson Elementary School Principal and PTA have been very involved in all stages of this School area plan. Staff met with school representatives on April 2008, to discuss their observations and suggestions for changes to the current plan. Their comments have been incorporated into this evaluation.

It should be noted that all of the measures have not been implemented to date. A more detailed analysis of each approved measure is provided below:

1. Replace missing traffic signs and street name signs. This action has been completed and appears to be improving driver compliance of the rules-of-the-road, as well as raise awareness of pedestrians and discourage speeding in the school area.

2. Concentrate traffic and parking enforcement around the school campus on a regular basis. Additional police enforcement has been made, especially in the Fall, however, school representatives note that enforcement activity has been reduced in recent months.
3. Paint school crosswalks and markings on an annual basis. This action has been implemented at several locations to reinforce compliance of pedestrian right-of-way rules and raising awareness of pedestrians in the school area.
4. Post a new "Student Loading Zone 7:45am to 9am, 1pm to 3pm School Days Only" on the east side of Morningside Drive between the school turnout and Francisco Street to the south. This measure was implemented during Spring Break 2007 and the time was adjusted at the request of the school to more closely match the school loading times. This extended loading zone has improved traffic circulation in front of the school and is used for short-term parking during non-loading hours. In addition, the City added a third loading zone sign and painted a white stripe to designate the loading zone area pursuant to subsequent discussions with school representatives. This stripe has improved the orderliness of the loading operation.
5. Add a new student "Student Loading Zone 7:45am to 8:30am School Days Only" on the north side of Francisco Street adjacent to the kindergarten gate. This measure was implemented during Spring Break 2007 primarily to designate a loading zone for kindergarten students close to their classrooms. School representatives have asked that this zone be relocated to a gate further east that is open to all students during the morning arrival time instead.
6. Post "NO LEFT TURN" signs from southbound Morningside Drive into the Robinson School loading turnout. This measure was completed during Spring Break 2007 and has been found to reduce vehicle conflicts and congestion along Morningside Drive. Parents are now accustomed to entering the loading queue line in the northbound direction only. At the request of the school, an additional sign has been placed to reinforce this prohibition.
7. Post "RIGHT TURN ONLY" signs out of the Robinson School loading zone onto Morningside Drive. This measure was completed during Spring Break 2007 and appears to be reducing vehicle conflicts, back-ups and congestion along Morningside Drive.
8. Paint new school crosswalks on the south and west legs of the intersection at Morningside Drive and 1st Street. This measure was completed during Spring Break 2007 and has helped make drivers more aware of pedestrian crossings at this intersection.
9. Paint new school crosswalk on the east leg of Francisco Street at Morningside Drive. This measure was completed during Spring Break 2007 and appears to be raising driver awareness of a school zone and school age pedestrians. Drivers stop more often behind the crosswalk lines and look both ways.

10. Install stop signs and school crosswalks in all directions at the intersection of Morningside Drive and 2nd Street. This measure has been completed and has improved both pedestrian and driver safety at the intersection by providing positive right-of-way control for all users.
11. Install “NO PED XING” signs on the east and west legs of 1st Street at Vista Drive. This measure was completed during Spring Break 2007 and has prevented many pedestrian conflicts at the side vehicle gate to the school. However, additional enforcement and education is necessary to reduce the number of violators at this location.
12. Encourage the school to start a formal program to enlist volunteer and/or staff supervision to assist student loading/unloading at main loading zones. School representatives should be present at the meeting to inform the Committee on any actions they have taken to implement a formal program. The school does post loading zone signs and places cones in the loading zone area to keep an orderly flow.
13. Encourage the school to implement a formal student car-pool and walking incentive program for both parents and students. The school encourages walking on certain days as a way to get students in the habit of walking to school. School representatives may be able to provide additional details.
14. Encourage the school to create a new on-campus student loading area in the staff parking lot along Francisco Street. This measure was discussed with school representatives for their consideration to present to the School District as a capital project. Status is unknown at this time.
15. Prepare Suggested Routes to School map for distribution to parents. A new Suggested Route to School map prepared by the City will be distributed at the start of the upcoming school year. This action will help educate parents and students of the preferred routes when walking or biking to school. It can be used to encourage more walking to school, thereby reducing traffic congestion on streets surrounding the school.
16. Encourage the school to distribute traffic safety handouts regularly throughout the school year. This action will remind school staff, students, parents and other users to follow the recommended driving, walking and parking practices in order to reduce potential residential impacts.
17. Conduct crossing guard study at 1st Street and Morningside Drive. The crossing guard study is still pending at this time.
18. Conduct crossing guard study at Francisco Street and Morningside Drive and at Francisco Street and Valley Drive. The crossing guard study is still pending at this time.
19. Request the City of Hermosa Beach to modify street sweeping restrictions to avoid conflict with school hours. The City of Hermosa Beach decided not to change the street sweeping restrictions due to resident objections.

20. Post a street sweeping restriction on the east side of Morningside Drive adjacent to the school. This measure was completed on the east side of Morningside Drive.
21. Work with the school to explore pedestrian improvements to encourage use of the pedestrian access gate at Ingleside Drive. The School's past practice is to regularly open the pedestrian access gate at Ingleside Drive except during when it is raining or during a special event on the adjacent field.
22. Paint 20 feet of red curb on the south side of 1st Street just west of Ingleside Drive adjacent to the crosswalk. This measure was implemented during Spring Break 2007 and appears to have improved visibility of pedestrians crossing at the intersection from the south side.

Other Possible Measures

Pursuant to the City's discussions and meetings with school representatives, several additional measures have been considered:

Paint a marked crosswalk in the front of the school at the south end of the loading turn-out.

The City Traffic Engineer evaluated this request and determined it is not an appropriate location for a marked crosswalk for the following reasons:

- A. This crosswalk would cross the loading zone line, and students should not be walking between moving cars.
- B. Most of the homes across the street are not in the MB School District.
- C. The designated and safest route to school from the west is via the crosswalks at the stop signs at 1st Street.
- D. The only persons crossing there would be students that are dropped off on the west side of Morningside, which should not be encouraged.
- E. It would be an uncontrolled crossing, which would be hard to see and not expected by drivers.
- F. Crosswalk markings at an uncontrolled crossing would falsely raise pedestrian expectations that drivers would stop for pedestrians. It is actually safer for pedestrians to be more cautious when crossing without a crosswalk.

Paint a white student loading zone and divided lane line in the existing turnout in front of Robinson Elementary School. If the red curb were removed along the east side, the existing turnout can be used to greatly increase the amount of student loading zone in front of the school. The Fire Department does not object to use of this turnout as long as drivers do not leave their vehicles. This measure would further reduce congestion on Morningside Drive and improve loading zone efficiency. A white lane line should be painted along the center of the turn-out to provide two lanes: one for loading along the curb, and the other to bypass waiting cars.

Relocate existing school loading zone on Francisco Street easterly to the CDC gate and add an afternoon loading time between 2:30pm and 3pm. School representatives have asked that this zone be relocated to a gate further east that is open to all students during the morning and

afternoon loading times instead. This would increase the use of the loading zone and reduce demand along Morningside Drive.

Implement a regular and rotating police presence at Robinson School to enforce traffic laws. School representatives feel that additional police enforcement is critical to improving compliance with the school circulation plan.

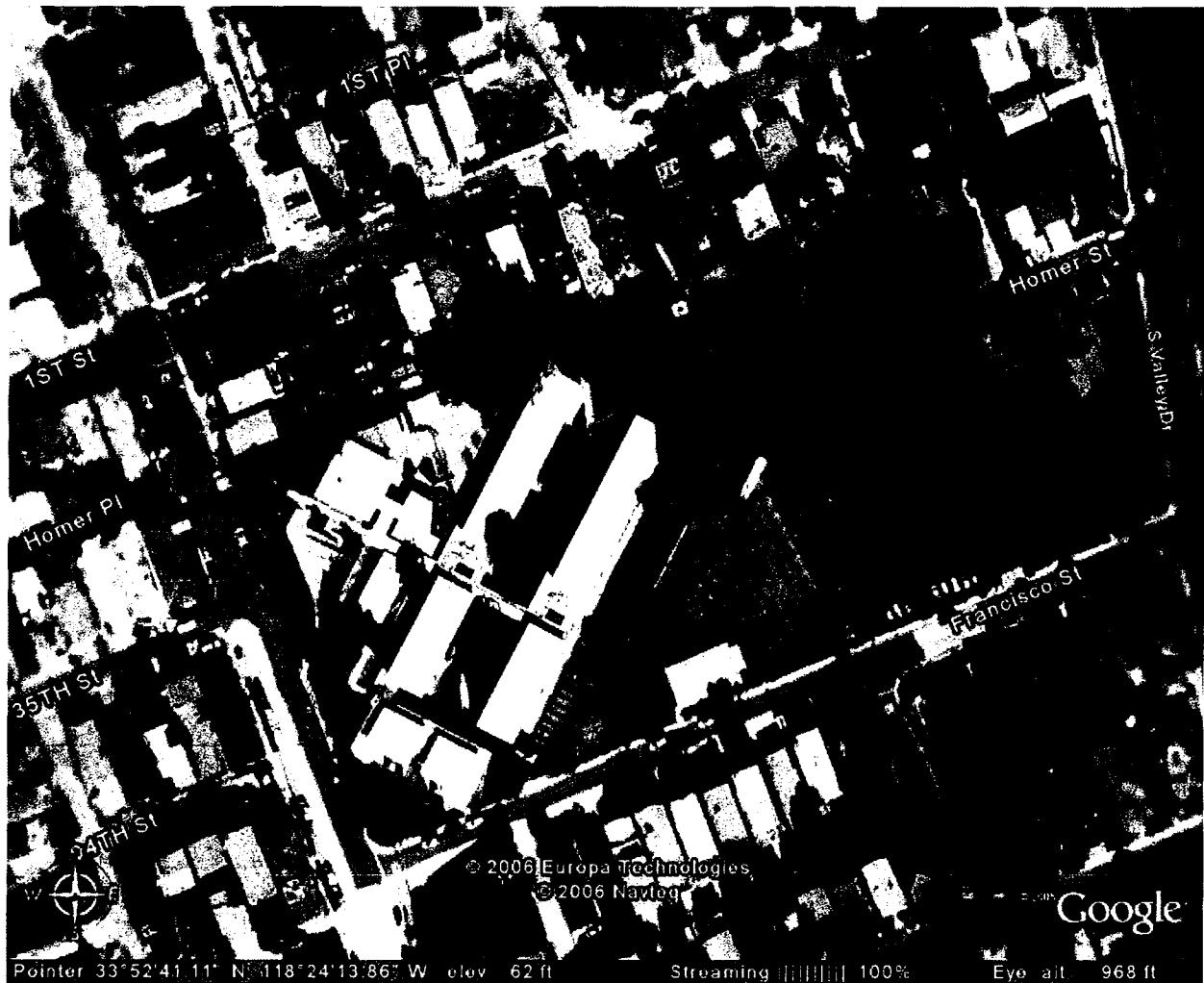
NEXT STEPS

Pursuant to the Neighborhood Traffic Management Program, parents, school staff and residents have been invited to this public workshop to discuss the recommended measures and gather comments regarding the existing and proposed conditions. The PPIC's recommendations and workshop comments will then be forwarded to the City Council. Once approved by the City Council, the initial measures would remain in place and new measures would be implemented. The City will continue to work with Robinson School and the School District to coordinate and monitor all measures. If the monitoring uncovers possible improvements that might improve traffic flow and safety, changes to the comprehensive plan would then be recommended to the PPIC as defined in the NTMP process.

Both the Fire and Police Departments have been involved in the preparation of the School Area NTMP and have no preliminary objections to the recommended actions. By way of mailed notices, the residents, school officials and affected parties surrounding the school campus have been invited to this PPIC meeting. Robinson School has also been encouraged to distribute the meeting notice to all school parents.

- Attachments:
- A. Neighborhood Vicinity Aerial Map / Area Map
 - B. Implemented Measures Diagrams
 - C. 3/20/07 City Council Staff Report and Minutes
 - D. Loretta Summers Request Letter
 - E. Meeting Notice

G:\1 TRAFFIC & ROW DIVISION\TRAFFIC ENGINEER\PPIC\PPIC-robinson school NTMP follow up.doc

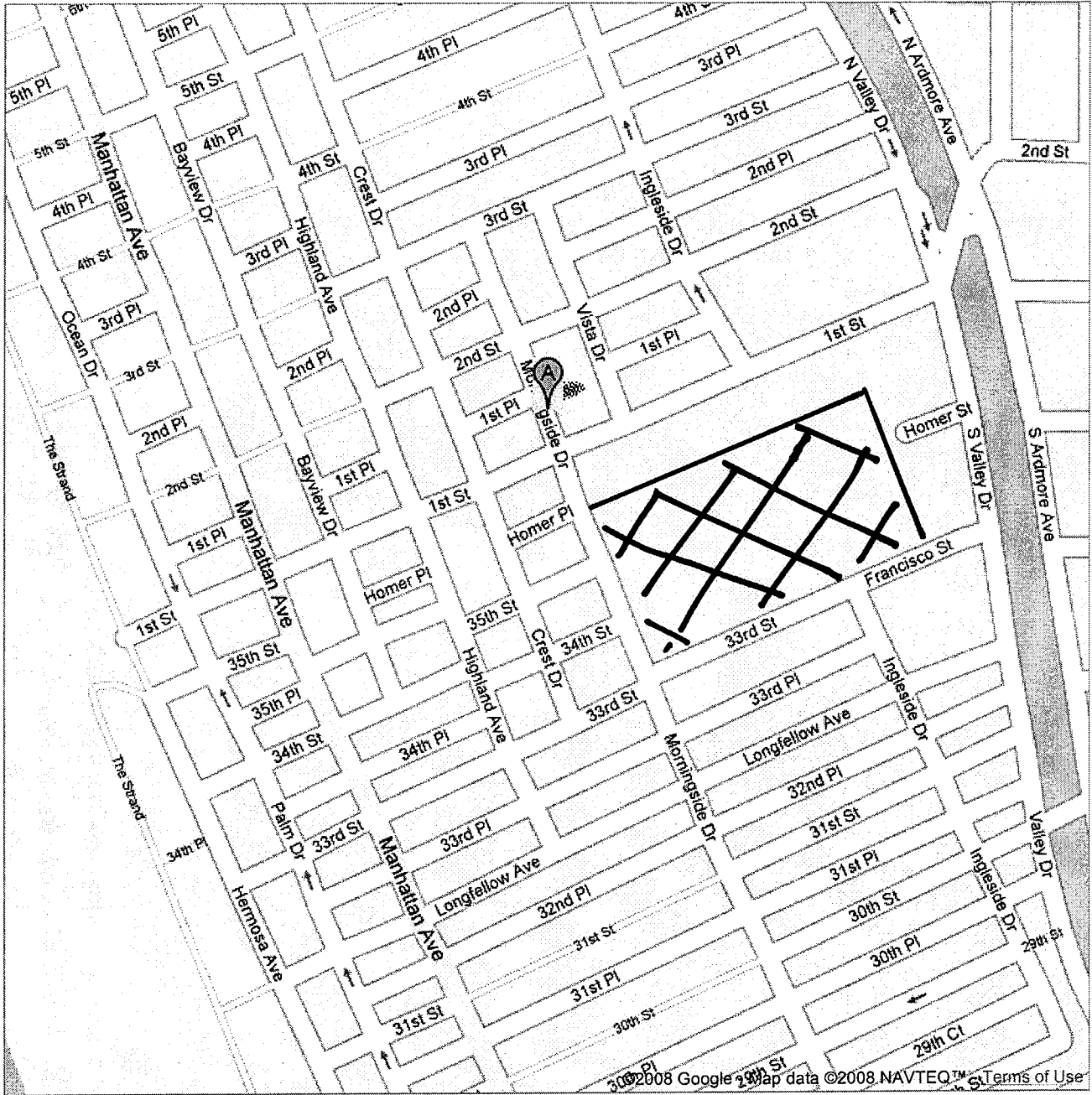


Robinson Elementary School
Neighborhood Vicinity Aerial Map



Address **80 Morningside Dr**
Manhattan Beach, CA 90266

Get Google Maps on your phone
Text the word "GMAPS" to 466453





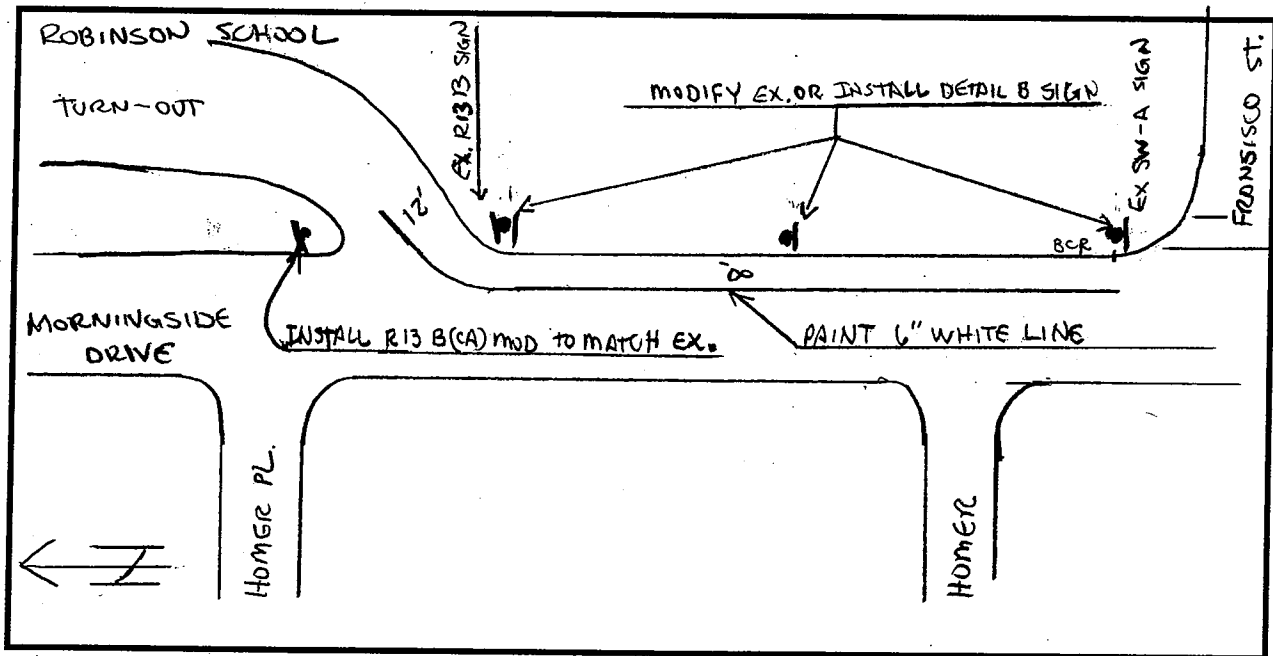
CITY OF MANHATTAN BEACH
PUBLIC WORKS SERVICE REQUEST

DATE: April 8, 2008
TO: Juan Price, Maintenance Superintendent
FROM: Ana Stevenson, Management Analyst
BY: Erik Zandvliet, Traffic Engineer *EZ*
SUBJECT: Striping and Sign Modification
Robinson Elementary School
Install School Area Neighborhood Measures

DESCRIPTION:

Please install signs and markings on Morningside Drive adjacent to Robinson Elementary School as shown below.

LOCATION MAP / SKETCH:



Approved By	Initial/Date	Completed by	Initial/Date
Director of Community Development			
Public Works Director		Checked:	

NO

**PARKING
SCHOOL
LOADING
ZONE**

7:45 TO 9 AM

1 TO 3 PM

SCHOOL DAYS ONLY

DETAIL B



CITY OF MANHATTAN BEACH
PUBLIC WORKS SERVICE REQUEST

DATE: March 29, 2007
TO: Juan Price, Maintenance Superintendent
FROM: Richard Thompson, Director of Community Development
BY: Erik Zandvliet, Traffic Engineer
SUBJECT: Striping and Sign Modification
Robinson Elementary School NTMP Measures

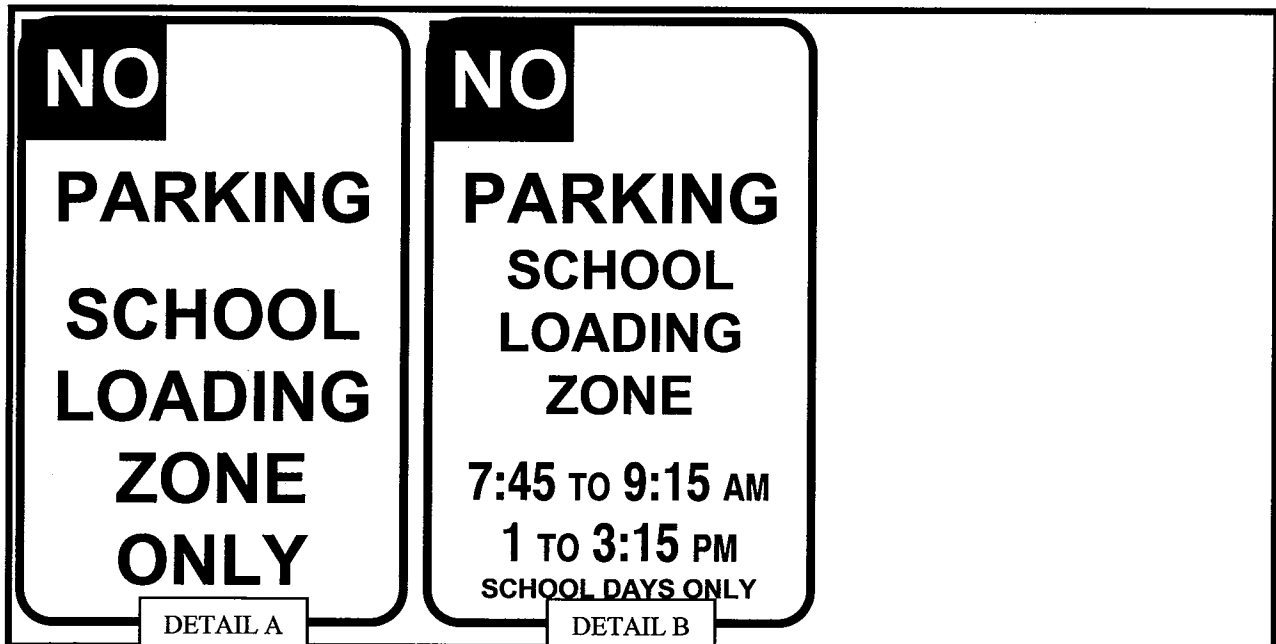
DESCRIPTION:

Please install or modify signs and markings around Robinson Elementary School as shown on attached plan.

City Council approved measures March 20, 2007.

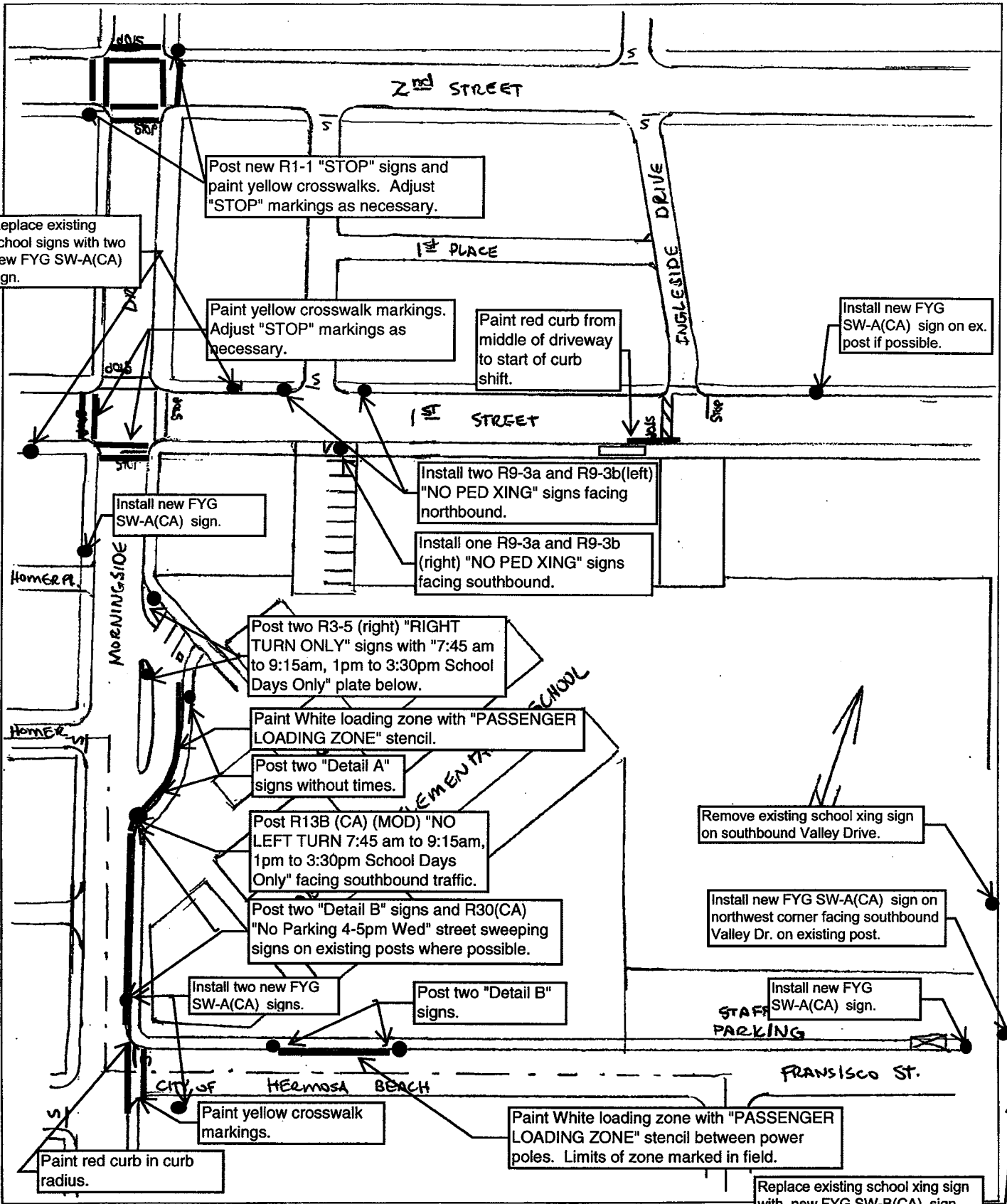
Contact Erik Zandvliet at 562-708-2254 if you have questions.

LOCATION MAP / SKETCH:



Approved By	Initial/Date	Completed by	Initial/Date
Director of Community Development			
Public Works Director		Checked:	

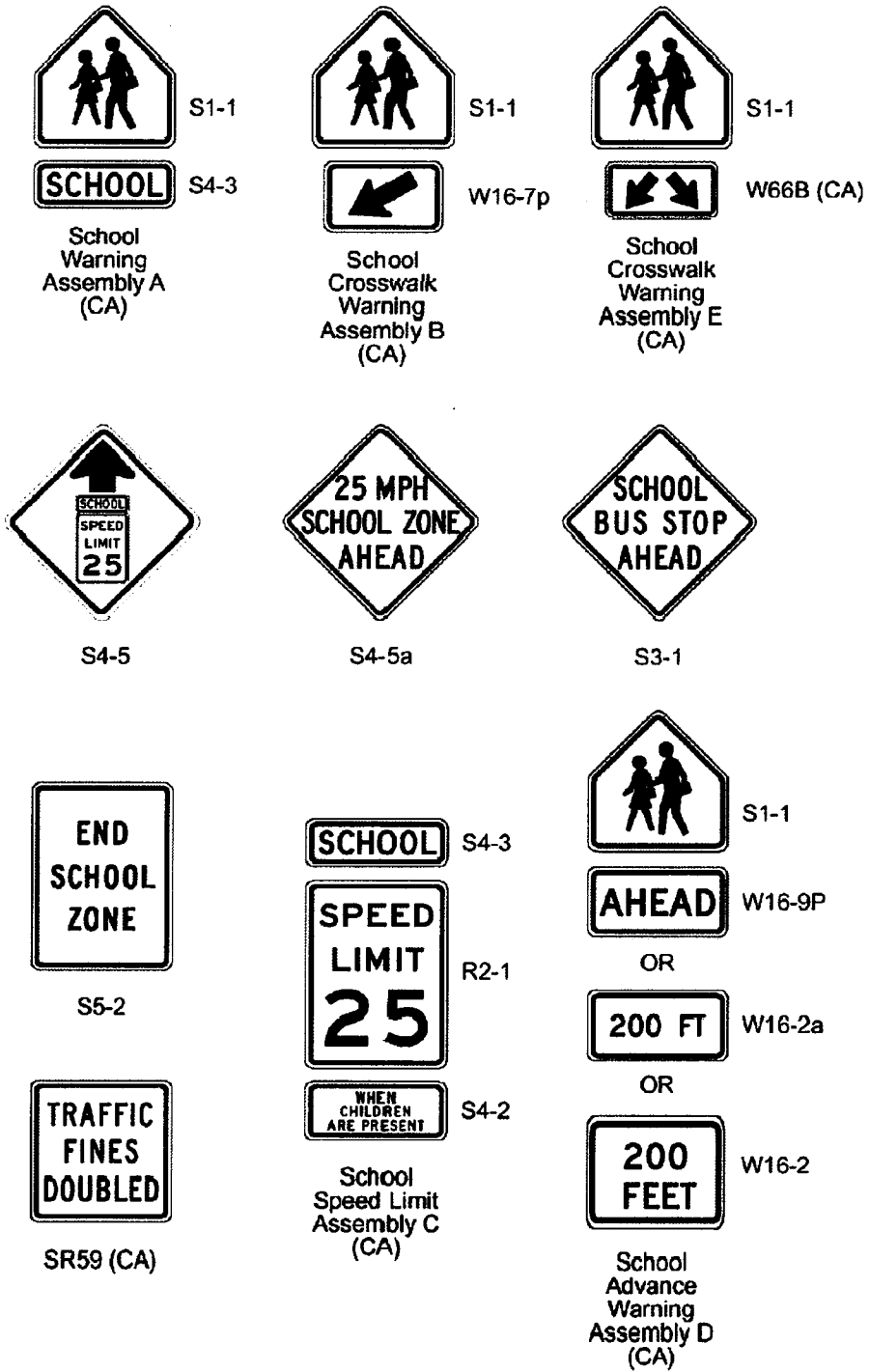
cc: Neil Miller, Director of Public Works
G:\Traffic Engineering\Service Requests\PW Service Request-.doc



City of Manhattan Beach
Department of Community Development

ROBINSON ELEMENTARY SCHOOL
POSSIBLE CIRCULATION IMPROVEMENTS

Figure 7B-1(CA). School Area Signs








Staff Report

City of Manhattan Beach

TO: Honorable Mayor Tell and Members of the City Council

THROUGH: Geoff Dolan, City Manager 

FROM: Richard Thompson, Director of Community Development 
By: Erik Zandvliet, City Traffic Engineer 

DATE: March 20, 2007

SUBJECT: Consideration of Initial Recommendations for the Robinson Elementary School Traffic and Parking Study

RECOMMENDATION:

It is recommended that the Council pass a motion to approve the Parking and Public Improvements Commission (PPIC) recommendation to implement the following traffic and parking management plan around the Robinson Elementary School campus for a six-month trial period (as amended in **bold**):

1. Replace missing or non-standard traffic and school area signs.
2. Concentrate traffic and parking enforcement around the school campus on a regular basis.
3. Paint school crosswalks and markings on an annual basis.
4. Add a new "Student Loading Zone 7:45am to 9:15am, 2pm to 3:15pm School Days Only" on the east side of Morningside Drive between the school turnout and Francisco Street to the south. The hours would reflect the modified Wednesday school schedule.
5. Add a new "Student Loading Zone 7:45am to ~~3:15pm~~ **8:30am** School Days Only" on the north side of Francisco Street adjacent to the kindergarten gate and encourage the school to use the adjacent pedestrian gates on Francisco Street. **(modified pursuant to Public Workshop)**
6. Post "NO LEFT TURN" signs from southbound Morningside Drive into the Robinson School loading turnout.
7. Post "RIGHT TURN ONLY" signs out of the Robinson School loading zone onto Morningside Drive.
8. Paint new school crosswalks on the south and west legs of the intersection at Morningside Drive and 1st Street.
9. Paint new school crosswalk on the east leg of Francisco Street at Morningside Drive.
10. Install stop signs and school crosswalks in all directions at the intersection of Morningside Drive and 2nd Street.
11. Install "NO PED XING" signs on the east and west legs of 1st Street at Vista Drive, on a temporary basis.

12. Encourage the school to start a formal program to enlist volunteer and/or staff supervision to assist student loading/unloading at main loading zones.
13. Encourage the school to implement a formal student car-pool and walking incentive program for both parents and students.
14. Encourage the school to create a new on-campus student loading area in the staff parking lot along Francisco Street.
15. Prepare Suggested Routes to School map for distribution to parents.
16. Encourage the school to distribute parking and traffic safety handouts regularly throughout the school year.
17. Conduct crossing guard study at 1st Street and Morningside Drive.
18. Conduct crossing guard study at Francisco Street and Morningside Drive **and at Francisco Street and Valley Drive. (added pursuant to Public Workshop)**
19. Request the City of Hermosa Beach to modify street sweeping restrictions to avoid conflict with school hours.
20. Post a street sweeping restriction on the east side of Morningside Drive adjacent to the school.
21. Work with the school to explore pedestrian improvements to encourage use of the pedestrian access gate at Ingleside Drive.
22. **Paint 20 feet of red curb on the south side of 1st Street just west of Ingleside Drive adjacent to the crosswalk. (added pursuant to Public Workshop)**

FISCAL IMPLICATION:

The recommended measures could be accomplished through existing Public Works programs and budgets with the exception of Measure Nos. 17 and 18, which would require appropriation of additional funding for a new crossing guard if warranted.

BACKGROUND:

In November 2002 the City Council approved the City-Wide Neighborhood Traffic Management Program (NTMP). The Program established a set of procedures for evaluating neighborhoods in an effort to improve livability of neighborhood streets. In March 2003, the Council directed staff to conduct studies of traffic and parking conditions in the areas surrounding the schools in Manhattan Beach.

The NTMP Program has been followed in developing possible vehicular and pedestrian improvements for Robinson School. Staff met with school representatives in September to identify concerns and suggestions. Soon after the initial contact with the School, a mailing was sent to area residents asking them to provide input related to neighborhood impacts. The information obtained was incorporated into an analysis that was presented to the Parking and Public Improvements Commission at a public meeting on December 7, 2006. On February 7, 2007, a public workshop was held with school representatives, parents and neighbors to gather additional comments and concerns regarding the proposed plan.

DISCUSSION

As described in the attached report the City Traffic Engineer identified concerns in the following areas:

- Need for Suggested Routes to School to show preferred pedestrian routes
- Long vehicle queue lines at student loading areas create congestion, particularly on 1st Street and Morningside Drive
- Merging school traffic from different directions
- Parking and driving violations adjacent to school
- Shortage of short-term visitor parking for the school
- Crosswalks needed at Morningside Dr./1st St. and Morningside Dr./Francisco St.
- Crossing guards needed at Morningside Dr./1st St. and Morningside Dr./Francisco St.

To address these issues, the Traffic Engineer recommended the following program of eighteen initial measures:

- Replace missing or non-standard traffic and school area signs.
- Concentrate traffic and parking enforcement around the school campus on a regular basis.
- Paint school crosswalks and markings on an annual basis.
- Add a new "Student Loading Zone 7:45am to 9:15am, 2pm to 3:15pm School Days Only" on the east side of Morningside Drive between the school turnout and Francisco Street to the south.
- Add a new "Student Loading Zone 7:45am to 3:15pm School Days Only" on the north side of Francisco Street adjacent to the kindergarten gate.
- Post "NO LEFT TURN" signs from southbound Morningside Drive into the Robinson School loading turnout.
- Post "RIGHT TURN ONLY" signs out of the Robinson School loading zone onto Morningside Drive.
- Paint new school crosswalks on the south and west legs of the intersection at Morningside Drive and 1st Street.
- Paint new school crosswalk on the east leg of Francisco Street at Morningside Drive.
- Install stop signs and school crosswalks in all directions at the intersection of Morningside Drive and 2nd Street.
- Install "NO PED XING" signs on the east and west legs of 1st Street at Vista Drive.
- Encourage the school to start a formal program to enlist volunteer and/or staff supervision to assist student loading/unloading at main loading zones.
- Encourage the school to implement a formal student car-pool and walking incentive program for both parents and students.
- Encourage the school to create a new on-campus student loading area in the staff parking lot along Francisco Street.
- Prepare Suggested Routes to School map for distribution to parents.
- Encourage the school to distribute parking and traffic safety handouts regularly throughout the school year.
- Conduct crossing guard study at 1st Street and Morningside Drive.
- Conduct crossing guard study at Francisco Street and Morningside Drive.

PPIC Meeting

On December 7, 2006, the PPIC discussed the findings and heard testimony from two area residents and one school representative. The speakers described concerns related to congestion

